

Have a go!

Design your own home! What might it look like? How big do you want it to be? Will you make it symmetrical like Hogarth did?

Draw your imagined home below:



Wow! You've finished your first design project as an architect!

Why not try building your home? You could use:

Lego

Clay

Card

or something else, get creative!

A house and home

KEY STAGE 2 (LOWER)



William Hogarth and his wife Jane moved into Hogarth's House almost 300 years ago. The house and garden looked very different then.

Explore the house and garden then and now!

My name is

**HOGARTH'S
HOUSE**



**London Borough
of Hounslow**



1

What's in the garden?

The garden at Hogarth's House used to have lots of trees in it. These trees grew fruits and nuts for the Hogarths in the summer. A mulberry tree is still there today. Its fruit look a bit like blackberries.

Imagine the mulberry tree had 127 mulberries on it and you ate 9 of them.

How many mulberries would be left on the tree? _____

How many would be left if you ate 20 more? _____

If there were 12 trees and William planted 10 more, how many trees would the garden have? _____

Oh no! Jane Hogarth was collecting fruit from the garden to bake a pie, but dropped her basket and her fruit spilled all over!

Unscramble the words below to discover what types of fruit grew at Hogarth's House:

rrshCeei

pritsocA

brrMeelius

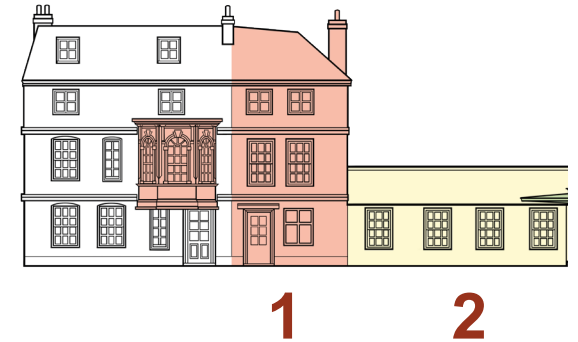
2

Home improvements

Hogarth's House has grown bigger over time. When William and Jane moved into his house they wanted more space so they added two extensions:

1 The first added the made the house look symmetrical and gave the Hogarths more room to have friends over.

2 The second made a bigger kitchen with more room to bake delicious pies with fruit from the garden!



3 In 2020 a third extension was added with room for activities.

If you were on the design team for the new extension, what would you make it look like? Draw it:

